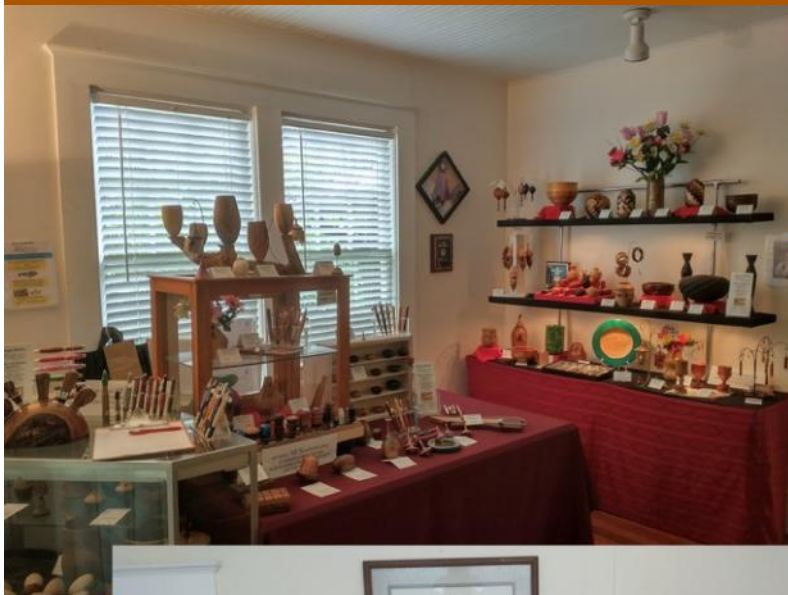


Chips & Bits

Inside This Edition

August 2022



**Inside Gallery at the
PRW Meeting
House**

Providing an environment that fosters the art and craft of woodturning

A Publication of the Peace River Woodturners

Bob Summers Shallow Bowl Demonstration



Presidents Message

HAVING FUN AT THE LATHE THIS SUMMER? We had another great meeting this month at Price House, with tons of tips & interesting turnings, shared through Bob Summers' Shallow Square Bowl Demo and Members' conversations... Join us whenever you can!

Price House Woodturning Gallery has gained a great reputation! We are selling Wood Art to international visitors & residents alike, so our reputation for “one-of-a-kind” unique gifts and decorative items, donated and consigned by Members, is growing swiftly. **I wish you all could have been here to witness** the group of Far Eastern visitors - Grinning and bowing to us as they backed out the Gallery door after a purchase, carrying one of Dan Harper's 4-foot tall segmented vases almost taller than they were! They refused to let us package it, and were excitedly showing it off to everyone in the Market as they strolled the brick pathway to their vehicle... Language barrier didn't interfere in that communication! From Novice small weed pots and bowls, birdhouses and vases, pens and ornaments, to Advanced segmented, carved turnings and vessels, we are selling Members' incredible work that obviously delights our customers. **YES, it's time to let your light shine, too!** Find new homes for your wonderful turnings through the Gallery. Customers come back every week to see the new items, and Holiday Buyers are already stalking our aisles for gifts – **What can you make to thrill them?**

Have you started on your piece(s) for the 2023 Wood Art Expo yet? It would be terrific if every PRW Member would participate, **especially all the Novice Turners!** There are so many categories to submit your turnings, surely you can find one where you're comfortable...

swflwoodrtexpo.org

We have acquired an older **Central Machinery (110-volt) lathe** with a swivel head, now up & running smoothly in the side room at Price House thanks to David Smith's TLC. This will soon be set up to easily transport to the Price Porch for demos on Sunday when the weather cools.

Please join us in helping the non-profit Kaden's Cause! Turn a small threaded-or-tight-fitting lidded hollow vessel, which will be donated to a grieving family of a child who has passed at too-young an age. We have more of the **ABS threaded pieces** in stock for \$10/set for your convenience. Check the PRW website **Resources Page** in **Unique Techniques** or **Hollow Vessels** for info on inserting threaded ABS closures, or hand-chasing threads. **For reference:** 1 cup = 14.5 cubic inches. **For sizing:** Plan on 1 cubic inch of space needed per pound of weight for cremains. Example: 25 pounds = 1.7 cups ashes; 65 pounds = about 4.5 cups ashes.

Bring your “Fun \$\$\$” to the September 1th meeting! David Smith will give the LIVE demo on creating Celtic Knot turning blanks on our bandsaw. We have lots of thin stock for segmenting, exotic wood chunks & larger pieces, and a snazzy fan-powered face shield for sale! Please park in the back lot of the Punta Gorda library at **501 Shreve Street** for a short walk to the Brown Building.

Price House Woodshop & Gallery

We have a home! Now it's time to get involved and share your enthusiasm for turning.

No more false modesty – You are all artists in one manner or another!

So far, over \$5,500 in “Turned Treasures” have gone to new homes from the PRW Gallery - Over \$2,600 has been generated for the PRW, and \$550 donated to the PG History Park.

Thanks are due for all the PRW Members' incredible works of art on display... and the help of our wonderful volunteers on Sundays from 9 AM to 1 PM talking with customers. What an incredible impression we have made in only *four hours each week* of doors open to the public!

“**Holiday and Visitor Season**” will be upon us all too soon, so now's the time to plan & start working on the projects you would like to donate or consign to us for sale at the Gallery! If you haven't yet seen what we have created in the Price House, you can be quite proud of the space and the many opportunities we have to utilize it! Come help us out on any Sunday.

Does anyone have a spare heavy-duty storage rack? We need one for the “wood room” at Price House. A 72” tall x 48” wide, any depth rack would be a helpful addition for that room!

Pick a Sunday, any Sunday, and sign up to be with us EVERY MONTH - Volunteer to hang out with us **ONE Artisan's Market Sunday EVERY MONTH** at the Price House Gallery from 9 AM to 1 PM. Stay for 2 hours, or for the whole time. Help us with setup, or help us with tear-down, or help with crowd control & woodturning questions from the public. You can even turn on one of our lathes - People love to see the wood shavings fly, and the work emerging as it happens!

Contact us to take a Class, or to **TEACH** a class! You each have unique talents that can be honed and shared, especially in a small group setting of 2 or 3 people. All Classes for Members at Price House will be “cost of materials only” - no add'l fees. The **General Public will pay \$50 for their first 2-hour “Tools & Techniques” Class**, which includes their PRW Membership for the calendar year! Next Classes will be as a PRW Member, materials only.

Donate a small turning every meeting for the PRW gift shop. Small items are great, like tops & birdhouses & pens & small bowls, or anything you'd like to create! Take a look at what we currently have in the Gallery – the range of works from Novice to Advanced is incredible!

If you have any “flawed gems” hanging around the shop, put a coat of finish on them & bring them along. The public is LOVING our woodturned treasures, small and large!

Want to sell your turnings? We're asking a small 30% donation (20% to the PRW & 10% to

PRW Calendar—What’s Next

August START NOW TO CREATE YOUR SUBMISSIONS FOR THE EXPO!

Sunday, August 21st **Price House Galley Open** 9 AM to 1 PM - Volunteers needed!

Sunday, August 28th **Price House Galley Open** 9 AM to 1 PM - Volunteers needed!

September KEEP WORKING ON YOUR SUBMISSIONS FOR THE EXPO!

Thursday, Sept 1st 6:30 PM **Monthly Demonstration Meeting** at Price House
DAVID SMITH will demo Celtic Knot Sled - creating blanks!

Sunday, Sept 4th **Price House Galley Open** 9 AM to 1 PM - Volunteers needed!

Sunday, Sept 11th **Price House Galley Open** 9 AM to 1 PM - Volunteers needed!

Thursday, Sept 15th Third Thursday **LUNCH & TURN** – 11:30 at Elena's, then

Sunday, Sept 18th
needed! **Price House Galley Open** 9 AM to 1 PM - Volunteers

Sunday, Sept 25th
needed! **Price House Galley Open** 9 AM to 1 PM - Volunteers

October
EXPO! WORK ON FINALIZING ON YOUR SUBMISSIONS FOR THE

Sunday, Oct 2nd
needed! **Price House Galley Open** 9 AM to 1 PM - Volunteers

Thursday, Oct 6th 6:30 PM **Monthly Demonstration Meeting** at Price House
Lou Currier demonstration, **Bob Summers** snacks

Sunday, Oct 9th
needed! **Price House Galley Open** 9 AM to 1 PM - Volunteers

Sunday, Oct 16th
needed! **Price House Galley Open** 9 AM to 1 PM - Volunteers

Thursday, Oct 20th
PRW Third Thursday **LUNCH & TURN** – 11:30 at Elena's, then

Sunday, Oct 23rd
needed! **Price House Galley Open** 9 AM to 1 PM - Volunteers

Sunday, Oct 30th
needed! **Price House Galley Open** 9 AM to 1 PM - Volunteers

Saturday, Nov 5th Art Fair – 2 tables at Punta Gorda Civic Assn Event

December 9th **WOOD ART EXPO Woodturning Entry Forms due!**

All PRW Members are asked to participate www.swflwoodartexpo.org
January 5th - 7th **WOOD ART EXPO** Charlotte Harbor Event Center

WHAT THE HECK ARE THEY TALKING ABOUT?

We use many terms in talking about woodturning that we assume are well understood... But are we sometimes using

“buzz words”, shortcuts, or jargon that can leave a listener baffled or confused?

It may be a good idea to explain a few tools, techniques, and ideas in a bit more detail to better understand what we

think we mean, and learn a bit more along the way! How about:

- HSS vs High carbon tools – What's the difference & why does it matter?
- What is a Flute?
- What is a Ferrule? What does it help?
- NRS – When is a negative rake scraper the correct choice?
- ABCD – Attach, Bevel, Cut, Dance – What is the significance here?
- Bevel – Rub it? What part of what tool is the bevel anyway?
- VariGrind 1 & 2 – What's the difference?
- CBN Wheels? Dressing Tool?
- Bowl and Spindle Gouge – What's the difference?
- Can a Bowl Gouge be used on a Spindle? Can a Spindle Gouge be used on a Bowl?
- Where the heck is my Banjo?
- MT1, MT2, MT3? What are these?
- Headstock, Tailstock – Livestock?
- What's Swing? Is that the D part of Dance?
- 1 x8, 1.25x8 – Why are these numbers important?
- What are the Ways? They're on the lathe?
- Longworth Chuck, Cole Jaws, Doughnut Chuck/Rings, Waste Block – What are they?
- What is a Jamb Chuck used for?
- What exactly is a Hollow Form?

Continued:

- Bowl Orientation & Spindle Orientation – Why are they different?
- What is Shear Scraping, and when do you need it?
- What is a Finial? When would I need one?
- Suction Fit vs. Slip Fit vs. Easy Fit – Which is better for what?
- Mortise vs. Tenon – When/Why/Best?
- Dovetail Jaws aren't for the birds?
- Serrated Jaws? Good for what?
- #1 Jaws, #2 Jaws, #3 Jaws – What's the difference?
- When do I need a Spindle Adapter?
- Roughing gouge vs Spindle Roughing Gouge – What's the difference?
- Carbide tools – Do you use them to cut or to scrape?
- Why are there 3 different shapes of Carbide Cutters?
- 8-inch Slow Speed Grinder? How many RPM is Slow?
- Do I need special wheels for HSS tools?
- Tormek? What's that?
- Calipers – Bowl? Inside? Outside? Make my own?
- Faceplate vs. Between Centers - Use which for what?
- Spur Drive – How is it used? Is there more than one type?
- Stebcenter? Live Center? Dead Center? What are those?
- What's a Bowl Coring Rig?
- What's a Chatter Tool, and a Texturing tool?

Let's see if we can't give you some basic answers to these questions, here in the Newsletter and in Monthly Meetings and discussions. Some are simple answer topics, many have variations based on experience

SHOW & TELL



Dave Smith



Bob Summers

Contact Us

President:

Cher Bauer: 941-743-5140

Vice President:

Bil Tucker: 941-979-7149

Past President:

Bob Summers: 941-460-9627

Treasurer:

Lou Currier

Secretary:

Bob Roehrig: 941-888-5142

Webmaster:

Cheri Bauer: 941-743-5140

Newsletter Editor:

Bob Roehrig: 941-888-5142

Librarian:

Mark Yates: 941-423-0444

Chapter Information

Peace River Woodturners Inc. (PRW) is an organization formed for individuals interested in woodturning and was formed on Oct 1, 2007. The primary purposes of the PRW are consistent with the fundamental purposes of the American Association of Woodturners: To provide information, education and an organization for those interested in turning wood.



The PRW web site can be found at:
www.peaceriverwoodturners.org



AAW site can be found at:
www.woodturner.org

Photo's

Photographs for this months "Chips & Bits" were provided by Bob Roehrig. If you have digital photo's that you would like to have considered for use in the newsletter, please send them along with any articles to the editor at:

rjroehrig@gmail.com

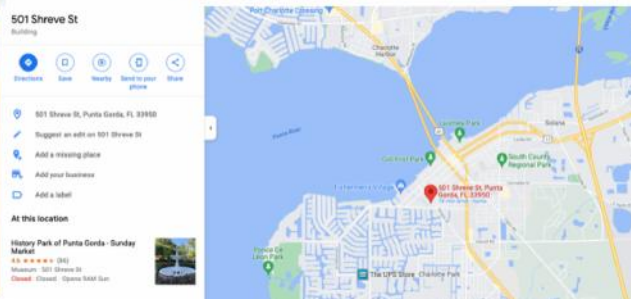
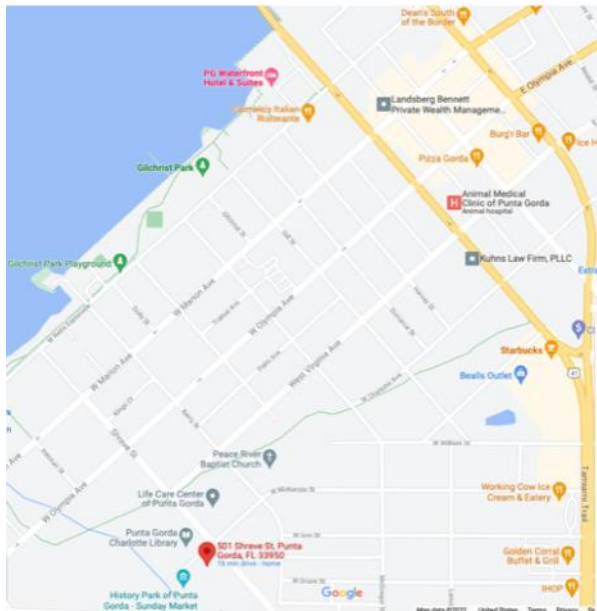
Membership

Yearly chapter dues are \$50 per individual or \$60 a family. Membership is for the calendar year. These dues help the club provide tools for our monthly demonstrations, bring in outside demonstrators, pay room rent, have a yearly picnic and other club related activities.

Meeting Location

Our Meetings are on the first Thursday of the month starting at 6:30 PM and ending by 9:00 pm. We meet at the Punta Gorda History Park at **501 Shreve St.** in Punta Gorda, Florida.

Our next meeting is: Thursday September 1 , 6:30 PM



Upcoming Events

PRW meeting: September 1st
Demonstration: Dave Smith
Celtic Knot Sled

:

Library

The Library is available for all current club members. The club library contains Books, magazines, and DVD's available to check out.. A list of materials is available on the PRW website: www.peacriverwoodturners.org Please help us maintain the library by returning checked out items promptly. The library is maintained by Mark Yates. New material can be ordered by request.